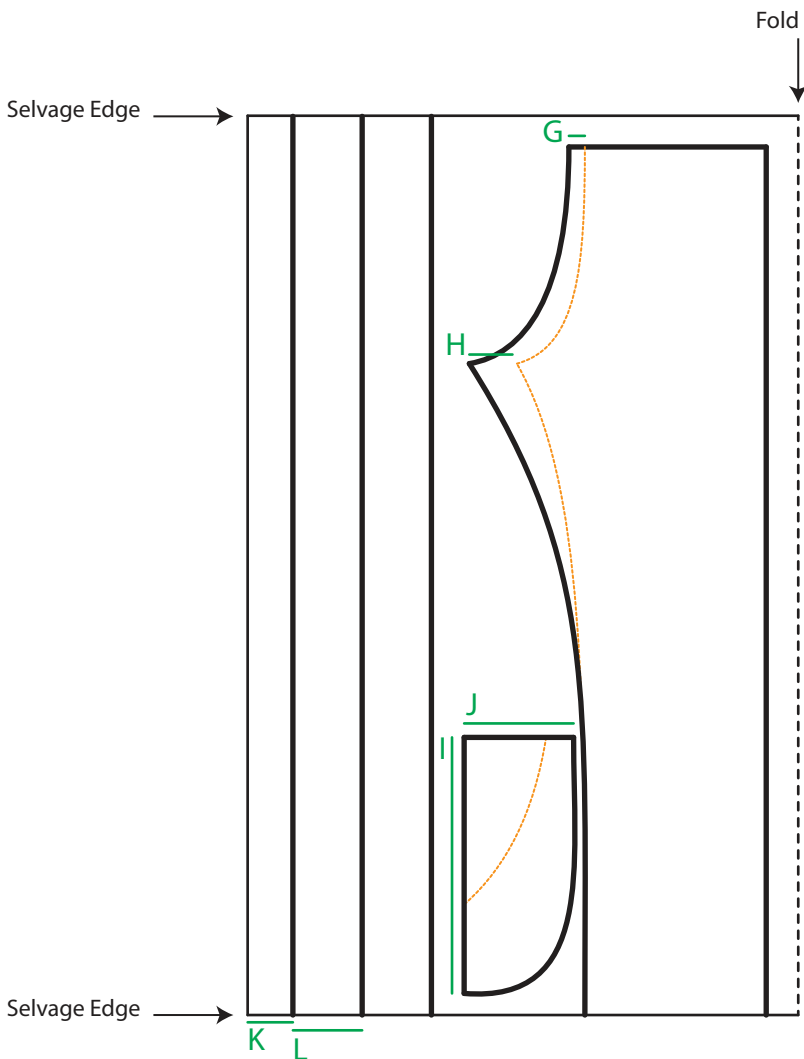


- A. Inseam (cut long to hem later)
- B.  $\frac{1}{4}$  hip measurement at widest point + 1" (loose measurement)
- C. Outseam from top of hip
- D.  $B * 1.33$
- E. 6"
- F. 3"

Note: Drawings not to scale. Your own cuts may look different depending upon measurements and desired fit. Cut pieces with  $\frac{1}{4}$ " seam allowance.



- G. 1"
- H. 2"
- I. 9.5"
- J. 4.5"
- K. 2.5" strip (for waistband)
- L. 3.5" strip (for drawstring)

In soft muslin, cut 2.5" strip for waistband and lining for pocket as marked in I and J, also cutting along orange diagonal.